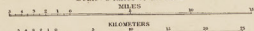


NEW JERSEY

From Original Surveys based on the
Triangulation of the U. S. Coast and Geodetic Survey

Scale: 5 miles to an inch



GEORGE H. COOK, State Geologist, C. VERMELLE, Topographer,
1888

NOTES.

The contour lines or lines of equal elevation are shown for each
50 feet south of the horizon and 100-foot intervals and for the first
50 feet north of each hundred feet north of said zero. The
lines at 100, 1500 and 2500 feet elevations are drawn to carry the
datum in cases we find.
By reference to the State Map on the same scale which shows
all villages, highways etc., map locality may be readily identified.

LEGEND.

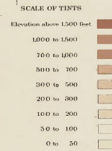
- Railroad Stations
- Tide Marsh
- Fresh Marsh and Swamp

PINE BARRENS RESEARCH GROUP

CONFIDENTIAL

PROJECT

CLASSIFIED



BACKGROUND

The idea that there are other dimensions lying side by side with our own has come out from the realm of science fiction to plant itself firmly into real theories in physics. With many different parallel realities laid out and operate independently past the veils that separate us. There is an idea that questions whether we can perhaps punch through that veil to travel between dimensions. There are amazing stories of this actually being accomplished; one is that of a remote, rural town in which strange experiments by renegade Princeton professors conducted quantum physics and chaos theory experiments to open the gap between alternate realities, for better or worse.

Claims are, the town all but abandoned in the 1930's, still showed up on maps and in 1978 a man by the name of Wali Fard settled in the New Jersey Pine Barrens and started a commune with other reneged scientists conducting all manner of strange experiments.

These experiments made use of an array of odd machines and devices. Among these was a device they called "The Egg," trying to descend consciousness down to the quantum level, which they believed would enable actual travel to parallel dimensions. During a test, the machine and test subject Kit purportedly vanished, only to reappear 7 minutes later with a startled but excited Kit, who claimed that he had been transported to another dimension. The scientists were astounded, and called the portal they had apparently opened "The Gate." They made more successful jumps to this alternate reality, which was described as having an abundance of plant life and water, but no humans.

The town was eventually threatened with a leak of dangerous nuclear material from nearby Fort Dix. In response, the residents began to use The Gate to flee to the parallel dimension, where they intended to stay. According to the tale, the government found out about the experiments, which prompted them to storm the compound in a raid that killed several people there who were in the process of jumping over. They captured several scientists and confiscated all the technology and documents.

Did these experiments continued? If so, to what end?



An inflationary universe does produce pockets...

Pocket universes which undergo cycles... produce habitable conditions repeatedly inside each pocket.

- Astrophysicist Jean-Luc
Lehners, Princeton Center
for Theoretical Science

SCOPE

Today, The Pocket, a black book project under the control of the Pine Barrens Research Group, a private sector, shadow government funded organization, has operated without oversight or regulation for the better part of a century; conducting countless experiments on men and women taken from all walks of life.

Based off the technology and research of the original experiments conducted in Ong's Hat, NJ PBRG has used decades of discovery and various hijacked or appropriated technologies to further their goals and perpetuate their every undertaking. Ever striving for more knowledge, power and control.

Currently PBRG is attempting to harness the properties of a lethal and pervasive biological threat, of as yet unknown other worldly origins, which eviscerates the infected and takes over the remaining shell with the sole intent of further spreading and consuming all in its path. PBRG seeks to subjugate this virus and twist it to their own devices in an effort to create the next evolution of mankind.

Subjects are selected based on unique genetic markers and a specific psychological makeup, and used as unwitting lab rats in a myriad of illicit procedures and tests. Pulled out of time the test subjects are held in a pocket universe isolated from ours, over and over again recycled as the raw materials in the most vile and heinous experiments, doomed to die. Only to be pulled back again and again to be purged of all memory and subjected to testing once more.



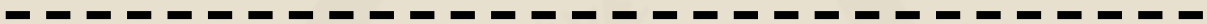
PBRG

A pocket universe or bubble universe is a concept in inflationary theory proposed by Alan Guth. It defines a realm like the one that contains the observable universe as only one of many inflationary zones.

METHOD & APPROACH

The visual style will be energetic, gritty, and cinematic. The framing will be bold; the cinematography will be dark and constantly shifting; the pacing will be fast.

Since the show pulls elements and characters from an number of time periods the show will reflect that idea with details (Use of multi-generational slang, classic cars, analog technology, oldies to modern music on the radio, etc.). This will add a fun nod of nostalgia as well as hint at the larger world at play, but these details must never be to overt and overwhelm the story or characters.



The Horror and Sci-fi elements in The Barrens though unnatural is rooted in the possible, in science. Alternate dimensions, Pocket universes, bio-chemistry, string theory, super soldiers, extra terrestrial biological threats; all these ground the shows reality.

The horror of the shows "creatures" and "infected" will be at play with humanities innate horrors (cruelty, violence, substance abuse, depression and death), all aspects of the human condition.

CONFIDENTIAL



STRUCTURE

The Barrens will be structured as serialized 5-hour sci-fi horror tale told over 10 half-hour episodes. There will be a definitive arc to the season with a beginning, middle and end to tell a full story, but not the whole story by any means. Leaving much more to be uncovered in future season(s).

The series, by nature, with its small cast split into control groups as well as the ability of the actors to portray various characters in recurring "loops" will allow for dynamic storytelling while being able to more easily adhere to proper COVID-19 safety protocols.

Additionally, this will allow for a narrow number of locations to be used continually in unique and various ways keeping the scope of the production contained.

Both of these factors will have the added benefit of assisting in keeping production costs and schedules controlled.



CONFIDENTIAL



PILOT PROGRAM



POCKET: GA**MFI 15DF15347SE#^

REPORTING TECH: 27

CONFIDENTIAL

SESSION DATA SUMMARY: **tech joined session already in progress**

Amanda and Brett laugh and flirt as they walk up the lawn and pause at the front door to kiss. The moment is broken by thundering crash from inside. The mood in the house is a complete contrast and the unsuspecting couple walk in to find Amanda's father, Nolan, on the ground in a compromised position, gun drawn, as an infected Helen, Amanda's mother, moves in for the kill. Amanda screams and draws her mothers attention. To save his daughter, Nolan shoots his wife. As her body falls dead, Amanda catches her. Having a glimmer of understanding about the situation at hand, Nolan cries out "NO!", rushing to his daughter, still brandishing the gun. Overcome with shock and fear Brett drags Amanda out of the house and the couple flee in Brett's car.

The pair of vehicles barrel down a dark back country road. Nolan at the wheel of the chase car, gun seated beside him, desperate to reach his daughter before it's too late... The two cars grind to a halt outside Brett's farmhouse, sending gravel and dust into the night air.

It's too late, the infection spreads quickly and not only does it take over her body but Brett's as well. Nolan is left with only one gut wrenching choice.

Having lost his family, all in one night, Nolan does his best to stop the outbreak from spreading further, but the infected have a mind of their own. Fighting to the bitter end, Nolan loses grip on reality as he too is overcome by the infection, or so it would seem, ... fade to black.

END OF SESSION NOTES

PILOT PROGRAM

CONFIDENTIAL

POCKET: GA**Nolan, M1SGTc397SW#^

REPORTING TECH: 27

SESSION DATA SUMMARY:

Nolan and Helen, alive and well as the couple go about the mundane tasks of the day... until Helen is infected.

Things play out in an abbreviated but eerily similar way as seen before and play out to their inevitable conclusion.

- Amanda and Brett return from their date.
- Helen attacks, Nolan kills her
- Chase ends at Brett's home drawing attention of his family.
- Brett, infected, shoots himself.
- Amanda cannot be saved.
- Infected attack
- Nolan fights to stop outbreak from spreading but is overcome.

Only a careful observer would pick up on the minor differences.

This time however, as the infected Nolan fights to the last he is shot by unseen gunmen and we fade to white. The whole time, the disembodied voice administers clinical instructions to unseen minions: "Secure all subjects for transport."; "Prepare to reset the stage"; "Bag and tag all samples"; "evacuate all non-essential personnel"; "move it people, next session starts in 4 hours".

END OF SESSION NOTES

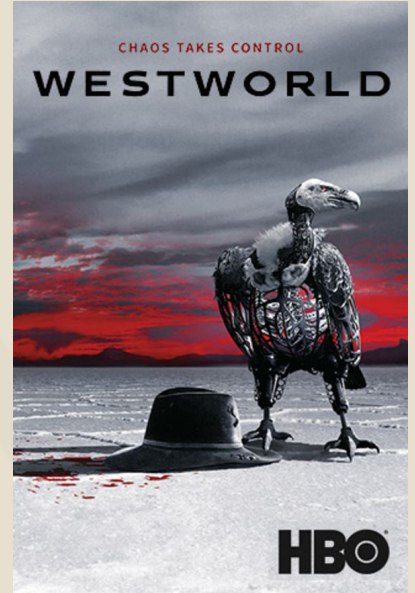


The world initially perceived seems to be the entire world...

It might be said that the inhabitant of any constricted environment lives in a pocket universe, whether as a child, a prisoner, a victim of dementia, a chained watcher in Plato's cave, a resident of Hell or an inhabitant of the world inside Pantagruel's mouth...

- John Clute, The Encyclopedia of Science Fiction

CROSS DATA



TEST SUBJECTS

GROUP A

NOLAN



AGE:
124 YRS.

Height:
5' - 5"

Weight:
191 LBS.



TRAITS:
 Lone Wolf
 Hands On
 Firearms Proficient
 Emotionally Closed Off
 Assertive
 Over Protective of Family

A man of old fashioned ideas and ideals who takes things at face value. A veteran of the great war who knows how to handle himself and almost any situation. But along with that rugged, take charge outdoorsman attitude comes a stubborn controlling nature, and a tendency to act first and ask questions later. A man of immense pride for better or worse.



AMANDA



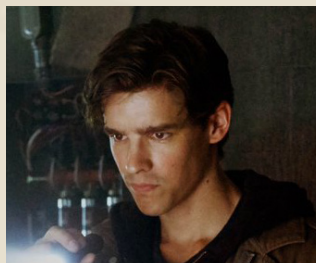
AGE:
68 YRS.

Height:
5' - 6"

Weight:
171 LBS.

Assertive, high spirited and a bit of a know it all. She is an apt problem solver with a willful attitude that knows just what buttons to push to get her way, but at heart a daddy's girl.

BRETT



AGE:
29 YRS.

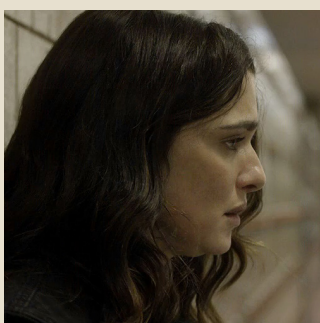
Height:
5' - 11"

Weight:
209 LBS.

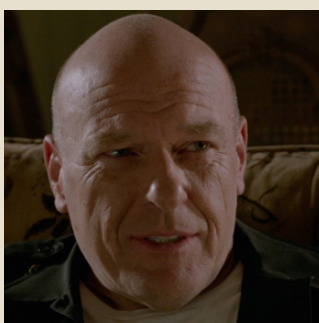
A tech savvy modern, millennial type. Not trusting of the government or "Big Brother" and loves of a good, or bad, conspiracy theory.



HELEN



BIG DOUG



CLAIRE



TEST SUBJECTS

GROUP B

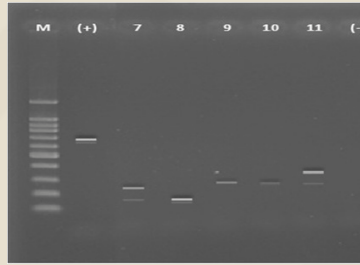
DANNI



AGE:
149 YRS.

Height:
5' - 7"

Weight:
168 LBS.



TRAITS:
Born Leader
Runs Mouth
Orphan

A strong willed intelligent woman who loves a lost cause and challenges established norms, but tends to do so a bit too enthusiastically for her and her causes good.

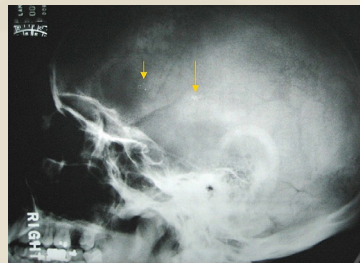
ALEX



AGE:
52 YRS.

Height:
6' - 1"

Weight:
219 LBS.



TRAITS:
Reserved
Quiet
Mechanically Inclined
Loner
Book Smarts





PBRG

Learn from me, if not by my precepts, at least by my example, how dangerous is the aquirement of knowledge, and how much happier that man is who believes his native town to be that world, than he who aspires to become greater than his nature will allow.

- Mary Shelley, Frankenstein

